

olivetti



# d-COPIA6500MF and 8000MF

## DEPARTMENTAL MULTIFUNCTIONAL SYSTEMS

BLACK&WHITE



MULTI-FUNCTION



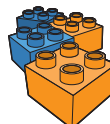
QUALITY



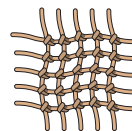
SPEED



MODULAR



NETWORK



SECURITY



# d-COPIA6500MF and 8000MF

DEPARTMENTAL MULTIFUNCTIONAL SYSTEMS



## THE PINNACLE OF PRODUCTIVITY, QUALITY AND SPEED

These high-end departmental monochrome multifunctional systems deliver an effective, low-cost solution for users who need to handle large workloads quickly and efficiently.

### MAIN CHARACTERISTICS

<b>PAPER CAPACITY UP TO 7,650 SHEETS FOR EXCEPTIONAL PRODUCTIVITY (WITH OPTIONS)</b>	<b>FAST SCANNING (160 IMAGES PER MINUTE)</b>
<b>MANAGEMENT OF PAPER WEIGHTS FROM 60 TO 300 g/m<sup>2</sup></b>	<b>FULL COLOUR 10.1" TOUCH SCREEN</b>
<b>STANDARD 160 GB HARD DISK (USER)</b>	<b>STAPLE FINISHING FOR DOCUMENTS OF UP TO 65 A4 PAGES</b>
<b>STANDARD 2 GB RAM</b>	<b>SUPER G3 FAX FUNCTION AND INTERNET FAX (OPTIONAL)</b>

#### PRODUCTIVITY

The Olivetti d-Copia 6500MF and d-Copia 8000MF are multifunctional systems offering outstanding productivity. Both models are designed to handle heavy-duty copy, print, scan and fax workloads in environments shared by large workgroups.

As a result, these monochrome systems are the ideal solution for schools, universities, legal firms, purchasing and business offices, copy centres and all workgroups, however large, that need to turn out A3 and A4 prints and copies and bound multipage documents quickly. To help maximise up-time, both systems' toner cartridges have a huge yield of up to 70,000 prints. They can also be replaced whilst the systems are printing.

#### POWER

The Olivetti d-Copia 6500MF and d-Copia 8000MF deliver network print and scan functions, thanks to considerable and enhanced memory capacity. The two systems offer 2 GB of RAM memory and a 320 GB hard disk (160 GB User/160 GB System). The fax feature is available as an option for both systems. Two optional fax systems can also be installed, to manage two separate phone lines. Both systems offer fast network printing via 1000Base-T Ethernet, duplex and single pass duplex scanning in colour as standard.



**10.1" TOUCH PANEL, MOUNTED ON AN ADJUSTABLE RAISED ARM**



**160 IPM DOCUMENT PROCESSOR WITH A CAPACITY OF 270 SHEETS**



**PAPER MANAGEMENT OF UP TO 7,650 SHEETS (VIA OPTIONS)**

### **DESIGN AND ERGONOMICS**

The two models provide innovative design features, including a practical control panel incorporating a broad 10.1" touch-screen mounted in a raised position on a swivel arm.

The height and angle of the panel can be adjusted to suit the height of the user, and permit use by disabled people. The mobility of the arm is optimised on 4 axes so that it can tilt and turn sideways. This is the first time this distinctive type of ergonomic solution has been implemented on monochrome systems.

### **FAST SCANNING**

The standard configuration of both models features the new high-speed Dual Scan Document Processor, with a capacity of 270 sheets, with dual scanning in a single pass to capture up to 100 ipm in colour and 160 ipm in black and white.

In addition, the processor implements an innovative system to prevent two pages of the original from being fed through together.

### **INNOVATIVE FUNCTIONS**

The d-Copia 6500MF and d-Copia 8000MF do more than offer enhanced performance compared with previous models. They herald the introduction of an important series of new functions designed to boost productivity in heavy-duty environments. First of all, copy quality has been improved so that copies of copies can be reproduced without compromising legibility.

The internal development unit now uses the same technology as colour systems, to improve print quality and prevent fading over time. To minimise the impact on the environment, the machines' print and copy density can be adjusted to reduce toner consumption. At the same time, these new models can independently de-prioritise blocked print jobs; e.g. if the job requires A3 paper but there is no A3 paper in the designated A3 drawer, and move on to other queued jobs that can be printed.

Other key features: tri-folding of A4 sheets (with the optional BF-730 unit), a full hard disk erase capability, a "stamp" function (text or info), and the printing of banners up to 1,220 mm in length.





4,000-SHEET FINISHER AND SADDLE FOLDING AND TRI-FOLDING UNIT OPTIONS

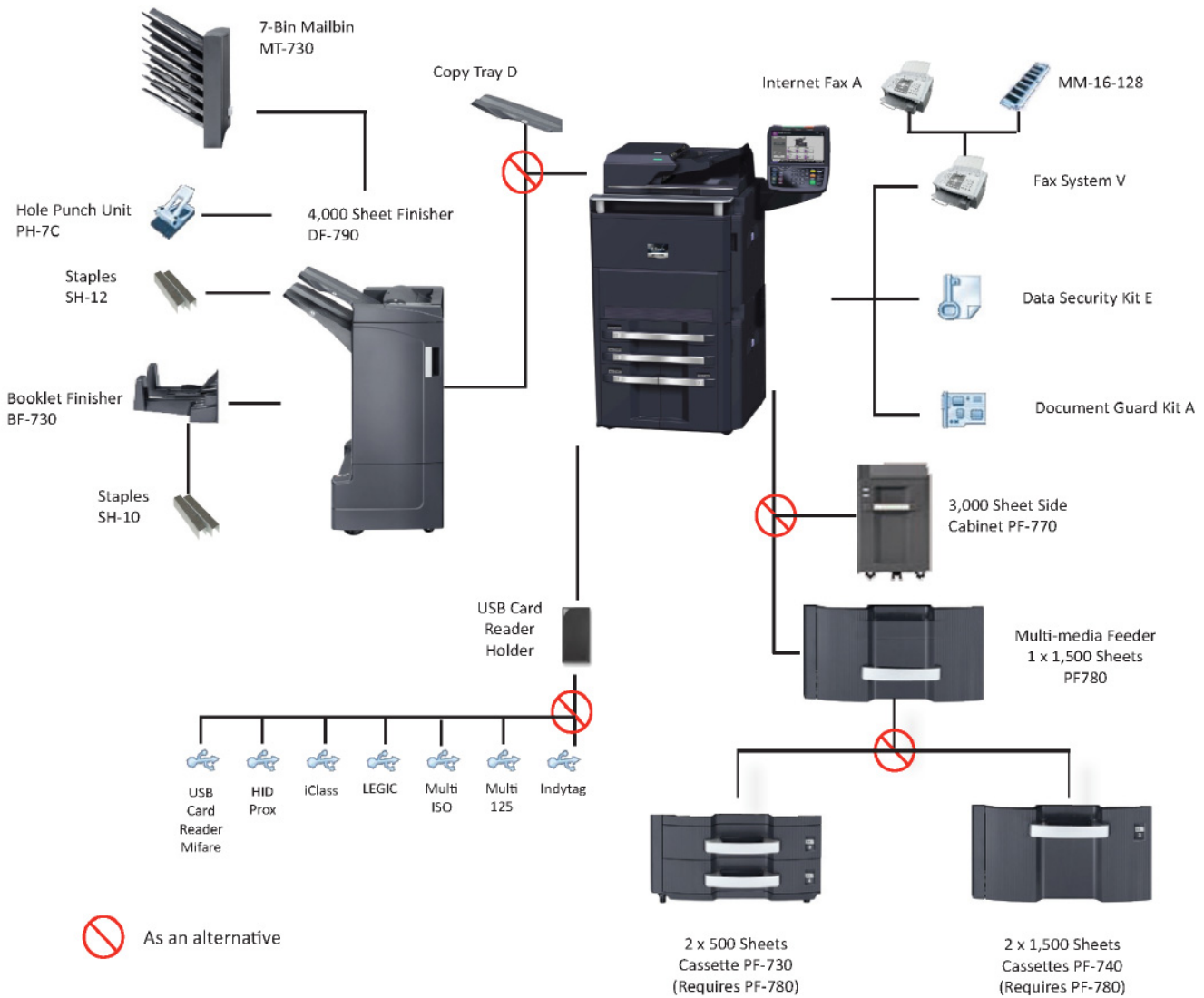


PAPER WEIGHTS FROM 60 TO 300 G/M<sup>2</sup>



STANDARD VERSION WITH DOCUMENT PROCESSOR AND 4 TRAYS

## OPTIONS for the d-Copia 6500MF & d-Copia 8000MF



NB: Images of accessories and options are for reference only and may vary from the exact model

# TECHNICAL SPECIFICATIONS

GENERAL	<b>Type Desktop/Console</b>	Console	<b>Customised Solutions</b>	Available via JAWS (Java and Web Solutions)
	<b>Technology</b>	Electrophotographic by semiconductor laser		
	<b>Photo-conductor Type</b>	Amorphous Silicon	<b>Warm-up Time</b>	45 seconds (from switching-on) 30 seconds (from low power mode)
	<b>Resolution</b>	600 x 600 dpi		
	<b>Speed</b>	d-Copia 6500MF: 65/32 ppm A4/A3 d-Copia 8000MF: 80/40 ppm A4/A3	<b>Consumption</b>	d-Copia 6500MF max. 1,210 W (basic), 1,430 W (full option) d-Copia 8000MF max 1,410 W (basic), 1,630 W (full option) Sleep mode 20 W (basic), 22 W (full option)
	<b>Greyscale</b>	256 levels		
	<b>Voltage</b>	220-240 V. (±10%), 50 Hz (± 2%)	<b>Dimensions (W x D x H)</b>	1,039 x 723 x 1,347 mm with no options 1,972 x 723 x 1,347 full options
	<b>Duplex Unit</b>	Built-in stackless type, A3 / A5R, (60 - 256 g/m <sup>2</sup> )		<b>Weight</b>
PRINTER	<b>Speed</b>	d-Copia 6500MF: 65/32 ppm A4/A3 (simplex & duplex) d-Copia 8000MF: 80/40 ppm A4/A3 (simplex & duplex)	<b>Interfaces</b>	1 x High Speed serial interface, USB 2.0 1 x Fast Ethernet 10Base-T / 100Base-TX / 1000 Base-T 2 x USB host interface 2 x PSTN interface (available with the Fax System V option)
	<b>CPU</b>	Power PC750GL - 800MHz		
	<b>Resolution</b>	600 x 600 dpi, ECO mode	<b>Stapling</b>	Available with optional finisher units DF-790
	<b>First Print Out Time</b>	d-Copia 6500MF: 5.8 seconds d-Copia 8000MF: 5.4 seconds	<b>Folding</b>	Tri-folding available with BF-730 unit for finisher DF-790
	<b>Operating Systems</b>	Windows XP, Vista, 7, Server 2003, Server 2008, Server 2008 R.2, Mac OS X version 10.3, 10.4, 10.5	<b>Hole-punching</b>	Available with hole-punch unit PH-7C for fitting with finisher DF-790 / 2 or 4 holes
	<b>Emulations</b>	PCL6, PCL5e, PCL-XL, KPDL3 (P.S.3 compatible, PDF direct printing support), XPS		
	<b>Fonts</b>	93 outline font (PCL6), 136 Post Script font (KPDL 3), 8 Win Vista	<b>Multi-purpose Tray</b>	Optional unit with 7 trays (available with the MT-730 unit) for finisher DF-790
SCANNER	<b>Document Processor</b>	Single-pass dual scanning type Paper capacity: max 270 sheets Paper weight: simplex 35-220 g/m, Paper weight: duplex 50-220 g/m,	<b>Original Type</b>	Text, Photo, Text + Photo
		<b>Scan Size (max.)</b>	A3	
		<b>Image Format</b>	TIFF, PDF/A, XPS, JPEG, High compression PDF	
	<b>Scanning Speed Simplex</b>	100 ipm Mono, 70 ipm Colour (A4, 300 dpi)	<b>Network Protocol</b>	TCP/IP
	<b>Scanning Speed Duplex</b>	160 ipm Mono, 100 ipm Colour (A4, 300 dpi)	<b>Network Interface</b>	Fast Ethernet 10Base-T / 100Base-TX / 1000Base-T
	<b>Resolution</b>	600 dpi, 400 dpi, 300 dpi, 200 dpi, 200 x 100 dpi, 200 x 400 dpi	<b>TWAIN</b>	Boxless TWAIN
			<b>Drivers</b>	TWAIN driver, WIA driver
<b>Colour Modes</b>	Mono, Colour, mixed mode ACS	<b>Functions</b>	Scan to PC, Scan to E-mail, Scan to FTP, Scan to USB, TWAIN source/WIA, WSD scan	
COPIER	<b>Scanning System</b>	Stationary type	<b>Standard Paper Supply</b>	Up to 150 sheets from by-pass (60-300 g/m) 2 front drawers x 500 sheets (60-256 g/m) 2 front drawers x 1,500 sheets (60-256 g/m)
	<b>First Copy Time</b>	d-Copia 6500MF: 5.2 sec. from platen d-Copia 8000MF: 4.7 sec. from platen		
	<b>Continuous Copying</b>	1-999 copies		
	<b>Memory</b>	2 GB RAM, 160 GB Hard Disk, 2.5" SATA	<b>Output Capacity</b>	Max. 250 sheets (80 g/m)
	<b>Max. Originals Size</b>	A3	<b>Zoom</b>	25% to 400% (in1% increments)
	<b>Copy Formats from Feeder</b>	A3-A5R		
FAX SYSTEM (V) (OPTION)	<b>Resolution (max.)</b>	Ultrafine	<b>Transmission Time</b>	3 second (JBIG at 33.6 kbps)
	<b>Compatibility</b>	ITU-TS G.3	<b>Memory Back up</b>	Yes (700 pages) / 7,000 pages option
	<b>Error Correction Mode (ECM)</b>	Yes	<b>Duplex Transmission</b>	Standard
	<b>Network Fax</b>	Yes	<b>One-touch Dial</b>	100 numbers
	<b>Compression Methods</b>	JBIG, MMR, MR, MH	<b>Broadcasting</b>	Up to 500 recipients
	<b>Greyscale</b>	256 levels	<b>Internet Fax Kit A</b>	Optional, compliant with T.37 Standard
	<b>Modem Speed</b>	33.6 kbps with Automatic Fall Back	<b>Dual Fax</b>	When installing 2nd Fax System (V) option

<b>Multi Media Feeder (PF-780)</b>	Top Cabinet with 1 drawer x 500 sheets Paper weight: 60-256 g/m <sub>c</sub> Original size: A3-A5R To be used as an alternative to PF-770 and together with PF-730 or PF-740	<b>Mailbox Unit (MT-730)</b>  Mail box unit for the DF-790 finisher Number of trays: 7 Paper size: A3 - A5R Tray capacity: 100 sheets A4, 50 sheets A3 Paper weight: 60-163 g/m <sub>c</sub>
<b>Paper Feeder (PF-730)</b>	Side Cabinet with 2 drawers x 500 sheets Paper weight: 60-256 g/m <sub>c</sub> Original size: A3-A5R To be used together with PF-780 in place of PF-740	<b>Booklet Unit (BF-730)</b>  Booklet unit for the DF-790 finisher Saddle stitch folding and stapling (A3-A4R) up to 16 sheets Tri-folding (A4R), up to 5 A4 sheets
<b>Paper Feeder (PF-740)</b>	Side Cabinet with 2 drawers x 1,500 sheets Paper weight: 60-256 g/m <sub>c</sub> Original size: A4 To be used together with PF-780 in place of PF-730	<b>USB Card Reader Authentication</b>  HID prox MIFARE LEGIC MULTI ISO MULTI 125 iClass Indytag
<b>Paper Feeder (PF-770)</b>	Side cabinet with 1 drawer x 3,000 sheets Paper weight: 60-300 g/m <sub>c</sub> Original size: A4 To be used in place of PF-780 & PF-730 or PF-780 & PF-740	
<b>Finisher (DF-790)</b>	External finisher for 4,000 A4 or 1,500 A3 sheets 3 output trays Stapling up to 65 A4 sheets or 30 A3 sheets	<b>Data Security Kit (E)</b>  The Data Security Kit encrypts data before storing it in the hard disk and overwrites all unnecessary data in the storage area.
<b>Copy Tray (D)</b>	Twin set of trays to be used in place of the finisher DF-790	<b>Snap-in USB card reader holder</b>  Stand for the MFP to hold the USB Card Reader
<b>Hole-punch Kit (PH-7C)</b>	Hole-punch kit for the DF-790 finisher Paper size: A3-A5R Paper weight: 45-300 g/m <sub>c</sub> 2 or 4 Holes	<b>Document Guard Kit (A)</b>  Prevents copying and/or scanning originals with security watermarks

Product performances are referred to as appropriate use under optimal conditions.  
 The registered trademarks are the property of their respective owners.

The support and availability of the listed specifications and functionalities varies depending upon operating systems, applications, network protocols as well as network and system configurations. All information relating to specification and accessories is subject to change without notice. Olivetti does not guarantee that any prices or specifications mentioned will be error-free

**d-Copia 6500MF** and **d-Copia 8000MF** are distributed by Olivetti S.p.A.  
 (10/11) - Code: 28193-00